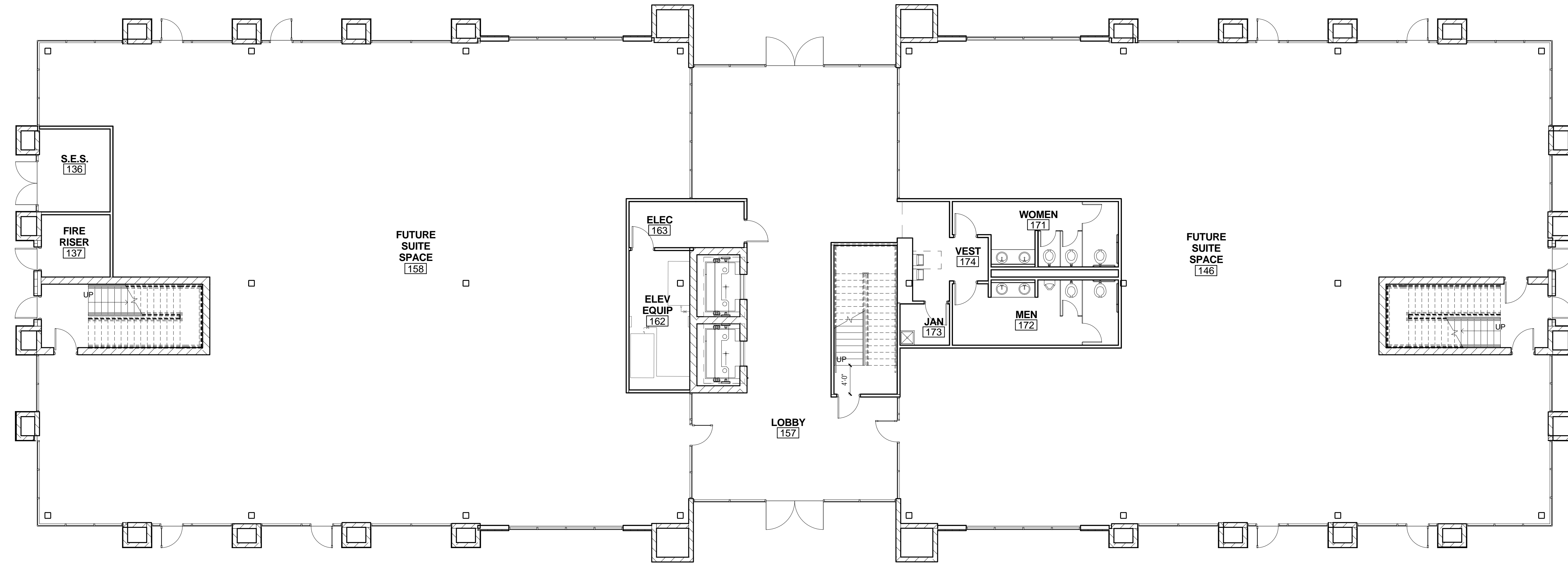


**Glendale NW Spec**  
 NEC 18185 N 83rd Avenue  
 Glendale, Arizona 85308

DEUTSCH ARCHITECTURE GROUP  
 4600 E. INDIAN SCHOOL RD.  
 PHOENIX, AZ 85018  
 PHONE: 602-840-2929  
 FAX: 602-840-6646  
 WEBSITE: WWW.2929.COM

Project Number: 14179.00  
 Drawn By: SC  
 Checked By: Checker  
 Date: 01/14/15

LEVEL 1

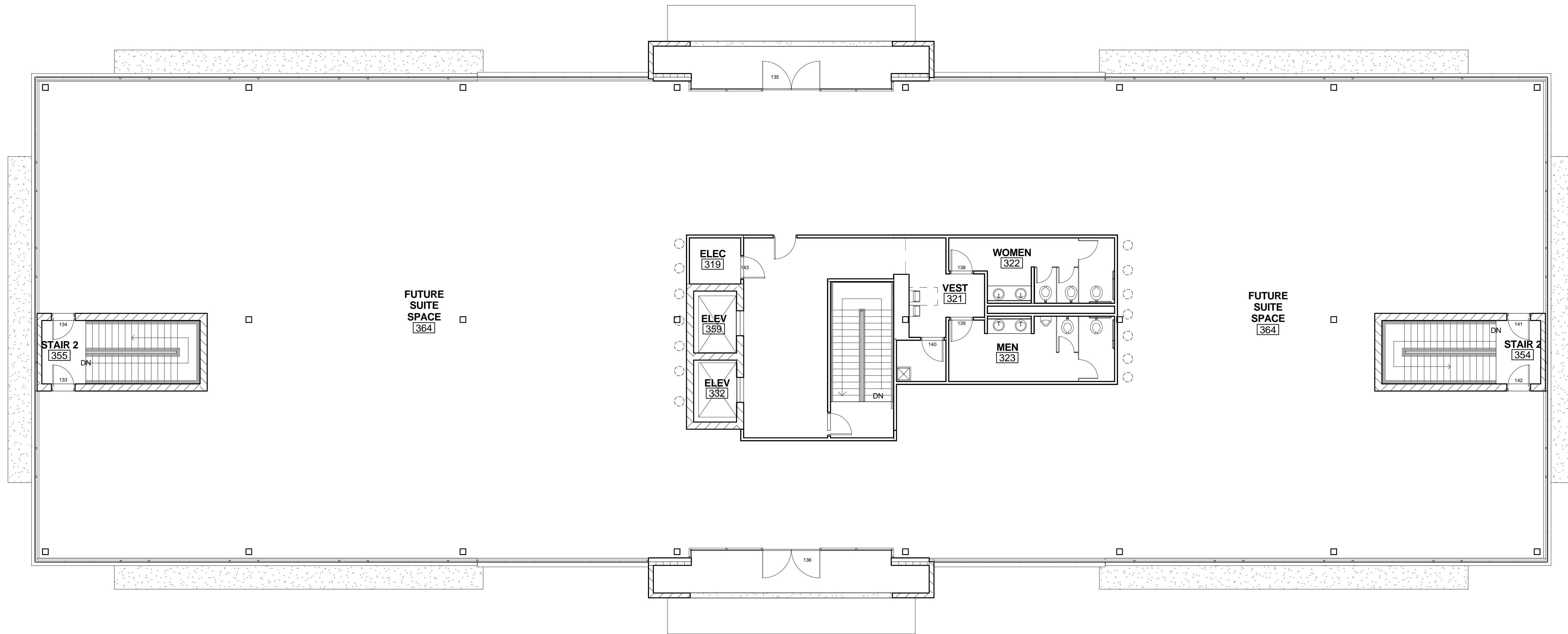


1 1st Floor Plan  
 SCALE: 1/8" = 1'-0"



Conceptual - Not For Construction

1A



1 3RD FLOOR PLAN  
SCALE: 1/8" = 1'-0"

**Glendale NW Spec**  
 NEC 18185 N 83rd Avenue  
 Glendale, Arizona 85308

DEUTSCH ARCHITECTURE GROUP  
 4600 E. INDIAN SCHOOL RD.  
 PHOENIX, AZ 85018  
 PHONE: 602-840-2929  
 FAX: 602-840-6646  
 WEBSITE: WWW.2929.COM

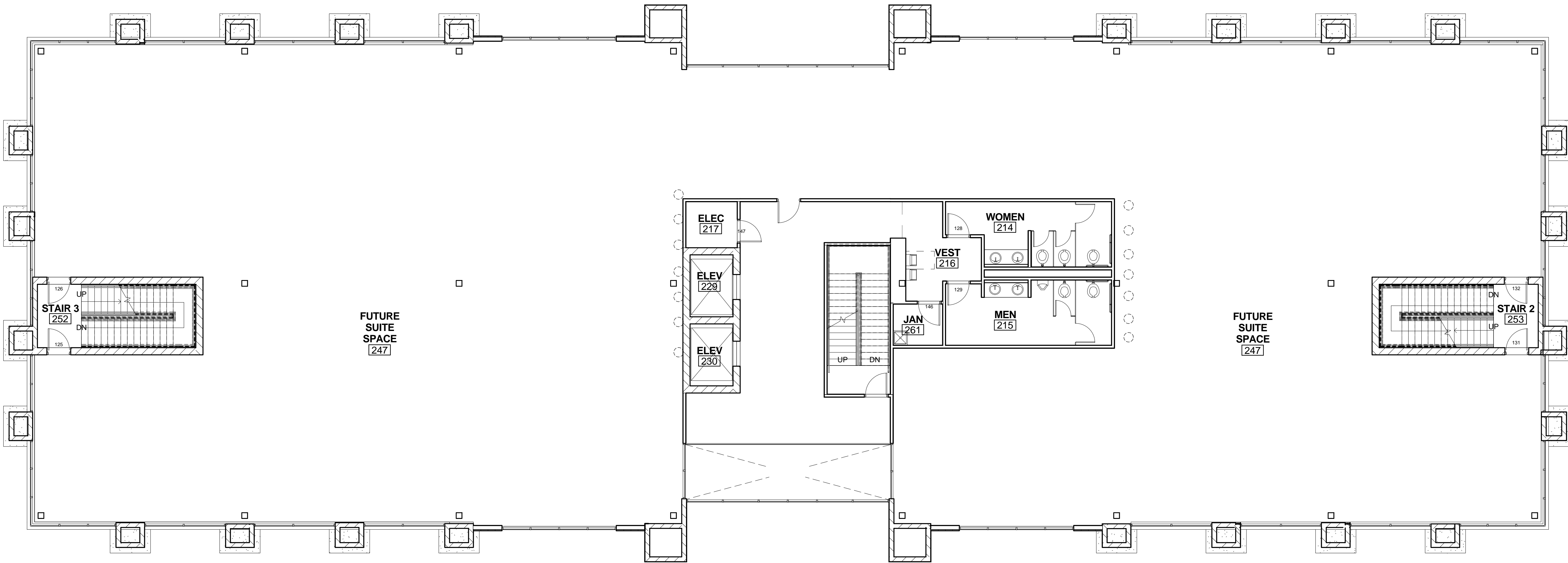
Project Number: 14179.00  
 Drawn By: SC  
 Checked By: Checker  
 Date: 01/14/15

LEVEL 3



Conceptual - Not For Construction

3A



**Glendale NW Spec**  
 NEC 18185 N 83rd Avenue  
 Glendale, Arizona 85308

1 2ND FLOOR PLAN Copy 1  
 SCALE: 1/8" = 1'-0"

DEUTSCH ARCHITECTURE GROUP  
 4600 E. INDIAN SCHOOL RD.  
 PHOENIX, AZ 85018  
 PHONE: 602-840-2929  
 FAX: 602-840-6646  
 WEBSITE: WWW.2929.COM

Project Number: 14179.00  
 Drawn By: SC  
 Checked By: Checker  
 Date: 01/14/15

LEVEL 2



Conceptual - Not For Construction

2A

© 2013 DEUTSCH ARCHITECTURE GROUP 1/14/2015 3:13:09 PM N:\14179.00\COND\DOC\14179\_Rev01.rvt\179-Glendale NW Spec Office\_SC.rvt